

# NRM SPATIAL HUB FACT SHEET

Online Property Planning and Information System

## TURNING BIG DATA INTO BETTER DECISIONS

A simple, secure online tool for mapping, planning and analysis

The online property planning and information system (OPPIS) is launching in October 2015. This is a significant milestone in the first stage of the NRM Spatial Hub initiative that provides property managers with new, easy to use tools to assist with improving management and investment decisions.

### OPPIS Fast Facts

- Secure online access for land owners to their data
- Map and monitor ground cover, on-ground works or the impact of changes in management practices
- Powerful time series satellite data available through a simple interface
- User-driven applications designed to improve management, profitability and investment decisions

### HOW OPPIS CAN BE USED

#### Use Case 1: Infrastructure Mapping

- Map the location and details of existing or planned infrastructure across each property, including fences, water points, roads and other features. Create your asset register.

#### Use Case 2: Land Type Mapping

- Update land types or systems across a property to better reflect the on-ground environment being managed

#### Use Case 3: Grazing Circles

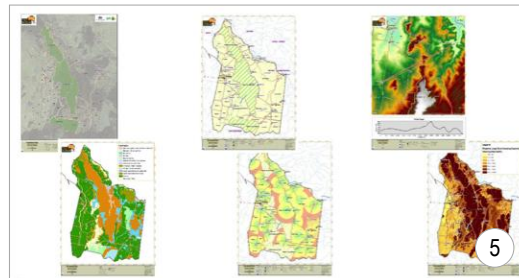
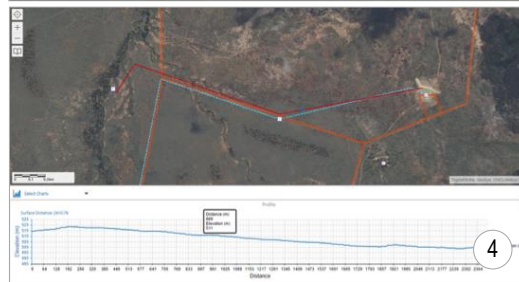
- Rapidly create grazing circles over a property based on different climate and water planning scenarios. Provides area watered and un-watered across the property for each scenario

#### Use Case 4: Water Infrastructure Planning

- Understand elevation profile and on ground distances when planning new water pipelines

#### Use Case 5: Mapping and Reporting

- Export a variety of publication standard maps and tables to record and analyse information about each paddock either online or offline.







### Use Case 6: Ground Cover Analysis

- Analyse changes in ground cover derived from satellite data for any period over the last 30 years for different reporting units (e.g. Paddocks or Land Types), and compare cover statistics between paddocks or against similar land in the local region

### Use Case 7: Safe Carrying Capacity

- Bring together land type, grazing circles, infrastructure and land condition information to estimate current and potential long-term safe carrying capacity for each paddock and land type within a property

### WHY INDUSTRY IS EXCITED ABOUT OPPIS

- User-driven information aimed at producing more efficient, profitable and sustainable livestock production
- Improving forage budgeting assistance
- Supporting statutory lease requirements
- Underpinning industries social license to operate

BUT DON'T TAKE OUR WORD FOR IT ...

"The ability to access detailed mapping with multiple functions, like layering, will change land management across the country".

PAUL RYAN

Olive Vale Pastoral Pty Ltd, Cape York Queensland

"To have access to up-to-date imagery and have the ability to cross reference that for grazing planning and long term monitoring is of huge benefits".

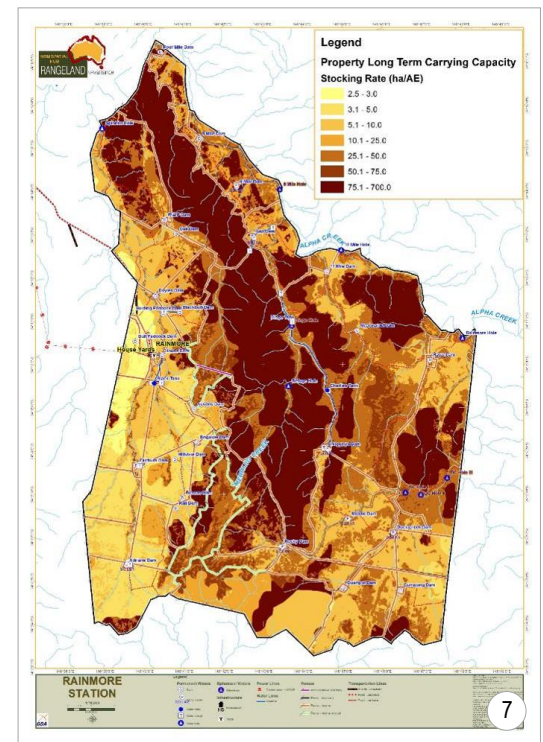
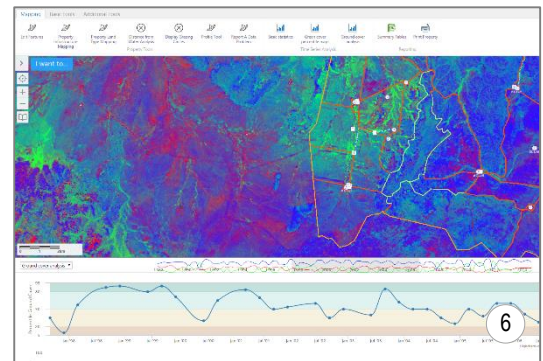
GRAHAM FINLAYSON

Bokhara Plains, Western New South Wales

"It's important for land managers to have access to the total property imagery the Hub offers. It will allow for better management of ground cover, as well as better assessment of new projects".

SAM GUNN

Sunset Station, central western New South Wales



Visit us at [www.nrmhub.com.au](http://www.nrmhub.com.au) and subscribe to our quarterly newsletter to stay informed.

If you would like to register an expression of interest in the Hub please email the team at: [nrmhub@gmail.com](mailto:nrmhub@gmail.com)

